



India Meteorological Department
Earth System Science Organisation
(Ministry of Earth Sciences)

BULLETIN NO.: 12 (BAY OF BENGAL 01/2020)

TIME OF ISSUE: 1715 HOURS IST

DATED: 17.05.2020

FROM: INDIA METEOROLOGICAL DEPARTMENT (FAX NO. 24643965/24699216/24623220)

TO: CONTROL ROOM, NDM, MINISTRY OF HOME AFFAIRS (FAX.NO. 23093750)

CONTROL ROOM NDMA (FAX.NO. 26701729)

CABINET SECRETARIAT (FAX.NO.23012284, 23018638)

PS TO HON'BLE MINISTER FOR S & T AND EARTH SCIENCES (FAX NO.23316745)

SECRETARY, MOES, (FAX NO. 24629777)

H.Q. (INTEGRATED DEFENCE STAFF AND CDS) (FAX NO. 23005137/23005147)

DIRECTOR GENERAL, DOORDARSHAN (23385843)

DIRECTOR GENERAL, AIR (23421105, 23421219)

PIB MOES (FAX NO. 23389042)

UNI (FAX NO. 23355841)

D.G. NATIONAL DISASTER RESPONSE FORCE (NDRF) (FAX NO. 26105912, 2436 3260)

DIRECTOR, PUNCTUALITY, INDIAN RAILWAYS (FAX NO. 23388503)

CHIEF SECRETARY, ANDAMAN & NICOBAR ISLANDS (FAX NO. 03192- 232656)

CHIEF SECRETARY, WEST BENGAL (FAX NO. 033-22144328)

CHIEF SECRETARY, GOVT. OF ODISHA (FAX NO. 0674 -2536660)

CHIEF SECRETARY, ANDHRA PRADESH (FAX NO. 0863-2441029, 08645-246600)

CHIEF SECRETARY, TAMIL NADU (FAX NO. 044-25672304)

CHIEF SECRETARY, PUDUCHERRY (FAX NO. 0413-2337575, 2334145)

Sub: Very Severe Cyclonic Storm 'AMPHAN' (pronounced as UM-PUN) over central parts of South Bay of Bengal: Cyclone Alert for West Bengal and north Odisha coasts: Yellow Message.

The Severe Cyclonic Storm 'AMPHAN' (pronounced as **UM-PUN**) over central parts of South Bay of Bengal and neighbourhood moved slowly northwards with a speed of 05 kmph during past 06 hours, further intensified into a **Very Severe Cyclonic Storm** and lay centred at 1430 hrs IST of today, the 17th May, 2020 over **central parts of South Bay of Bengal** near latitude 11.7°N and longitude 86.0°E, about 960 km south of Paradip (Odisha), 1110 km south-southwest of Digha (West Bengal) and 1230 km south-southwest of Khepupara (Bangladesh). It is very likely to intensify further into an Extremely Severe Cyclonic Storm during next 24 hours. It is very likely to move nearly northwards slowly during next 12 hours and then re-curve north-northeastwards and move fast across northwest Bay of Bengal and cross West Bengal – Bangladesh coasts between Digha (West Bengal) and Hatiya Islands (Bangladesh) during the Afternoon / Evening of 20th May 2020 as a Very Severe Cyclonic Storm.

Forecast track and intensity are given in the following table:

Date/Time(IST)	Position (Lat. °N/ long. °E)	Maximum sustained surface wind speed (Kmph)	Category of cyclonic disturbance
17.05.20/1430	11.7/86.0	120-130 gusting to 145	Very Severe Cyclonic Storm
17.05.20/1730	12.0/86.0	125-135 gusting to 150	Very Severe Cyclonic Storm
17.05.20/2330	12.7/86.0	130-140 gusting to 155	Very Severe Cyclonic Storm
18.05.20/0530	13.5/86.0	140-150 gusting to 165	Very Severe Cyclonic Storm
18.05.20/1130	14.0/86.1	150-160 gusting to 175	Very Severe Cyclonic Storm
18.05.20/2330	15.2/86.3	170-180 gusting to 200	Extremely Severe Cyclonic Storm
19.05.20/1130	16.6/86.7	170-180 gusting to 200	Extremely Severe Cyclonic Storm
19.05.20/2330	18.4/87.2	170-180 gusting to 200	Extremely Severe Cyclonic Storm
20.05.20/1130	20.4/87.7	160-170 gusting to 190	Extremely Severe Cyclonic Storm
20.05.20/2330	22.4/88.2	120-130 gusting to 145	Very Severe Cyclonic Storm
21.05.20/1130	24.2/88.7	70-80 gusting to 90	Cyclonic Storm
21.05.20/2330	26.0/89.2	40-50 gusting to 60	Depression

Spatial rainfall distribution: Isolated: <25%, A few: 26-50%, Many: 51-75%, Most: 76-100%

Rainfall amount (mm): Heavy rain: 64.5 – 115.5, Very heavy rain: 115.6 – 204.4, Extremely heavy rain: 204.5 or more.

Warnings:

(1) Rainfall (over Andaman & Nicobar Islands):

- Light to moderate rainfall at most places is very likely over Andaman & Nicobar Islands during next 24 hours.
- **Rainfall (over Odisha & Gangetic West Bengal)**
Coastal Odisha is likely to experience light to moderate rainfall at many places with heavy falls at isolated places from 18th May evening. Rainfall at most places with heavy to very heavy rainfall at a few places on 19th May and isolated heavy rainfall over north coastal Odisha on 20th May 2020. Coastal districts of Gangetic West Bengal are likely to experience light to moderate rainfall at many places with heavy falls at isolated places on 19th May. Rainfall at most places with heavy to very heavy falls at a few places & extremely heavy falls at isolated places over Gangetic West Bengal on 20th May.

(2) Wind warning

- Squally wind speed reaching 45 to 55 kmph gusting to 65 kmph is likely to commence along and off south Odisha coast from 18th evening, extend to along & off north Odisha coast from 19th morning and along and off West Bengal coast from 19th afternoon. The wind speed will gradually increase becoming gale wind speed reaching 75 to 85 kmph gusting to 95 kmph from 20th morning along and off north Odisha and West Bengal coasts. It will gradually increase thereafter becoming 110 to 120 kmph gusting to 135 kmph along & off North Odisha coast and 120 to 140 kmph gusting to 155 kmph along & off West Bengal coast from the afternoon of 20th May 2020.
- Gale wind speed reaching 120-130 gusting to 145 kmph is prevailing over southeast and adjoining southwest Bay of Bengal. It is likely to increase becoming 140-150 gusting to 165 kmph over southern parts of central Bay of Bengal by 18th morning, 170-180 gusting to 200 kmph over northern parts of central Bay of Bengal and adjoining North Bay of Bengal on 19th, and 155-165 gusting to 180 kmph over north Bay of Bengal during 20th May.
- Squally wind speed reaching 45 to 55 kmph gusting to 65 kmph is likely over Andaman Sea during next 24 hours.

(3) Sea condition

Sea condition will be Phenomenal over central parts of south Bay of Bengal and adjoining central Bay of Bengal during next 24 hours. It will become Phenomenal over southern parts of central Bay of Bengal from tonight, over northern parts of central Bay of Bengal and adjoining north Bay of Bengal on 19th May and over north Bay of Bengal on 20th May 2020.

(4) Fishermen Warning

- The fishermen are advised not to venture into south Bay of Bengal during next 24 hours, to central Bay of Bengal during 17th to 18th May and into North Bay of Bengal during 18th to 20th May 2020.
- Also, fishermen are advised not to venture into north Bay of Bengal along and off North Odisha, West Bengal and adjoining Bangladesh coasts during 18th to 20th May 2020.

Kindly visit www.rsmcnewdelhi.imd.gov.in and www.mausam.imd.gov.in for updates on the system.

Next Bulletin will be issued at 2030 hours IST of 17th May, 2020.

(Sunitha Devi)
Scientist-E, RSMC, New Delhi

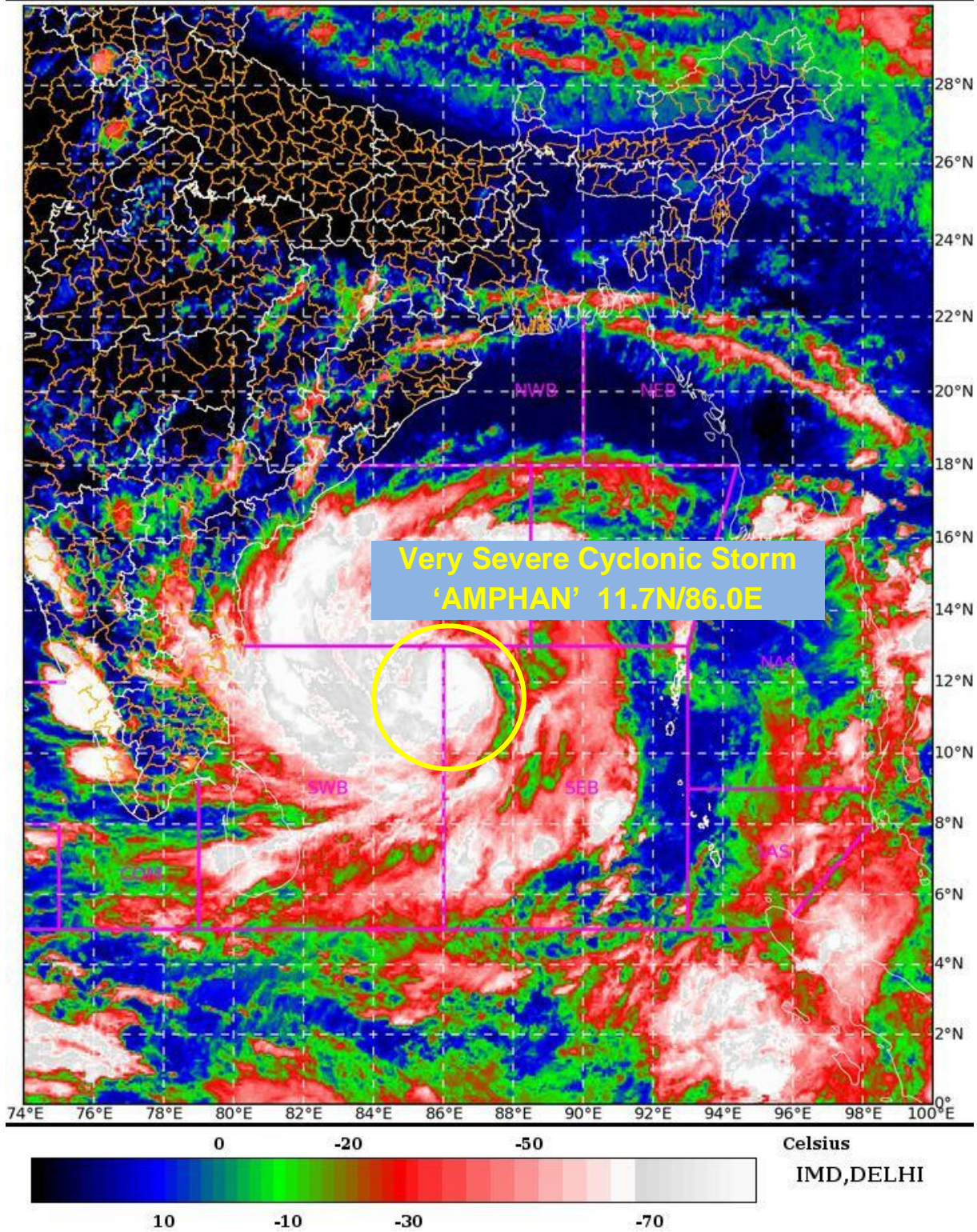
Copy to: CRS, Pune/ ACWC Chennai/ ACWC Kolkata/CWC Bhubaneswar/ /CWC Visakhapatnam

Spatial rainfall distribution: Isolated: <25%, A few: 26-50%, Many: 51-75%, Most: 76-100%
Rainfall amount (mm): Heavy rain: 64.5 – 115.5, Very heavy rain: 115.6 – 204.4, Extremely heavy rain: 204.5 or more.

SAT : INSAT-3D IMG 17-05-2020/(1030 to 1056) GMT

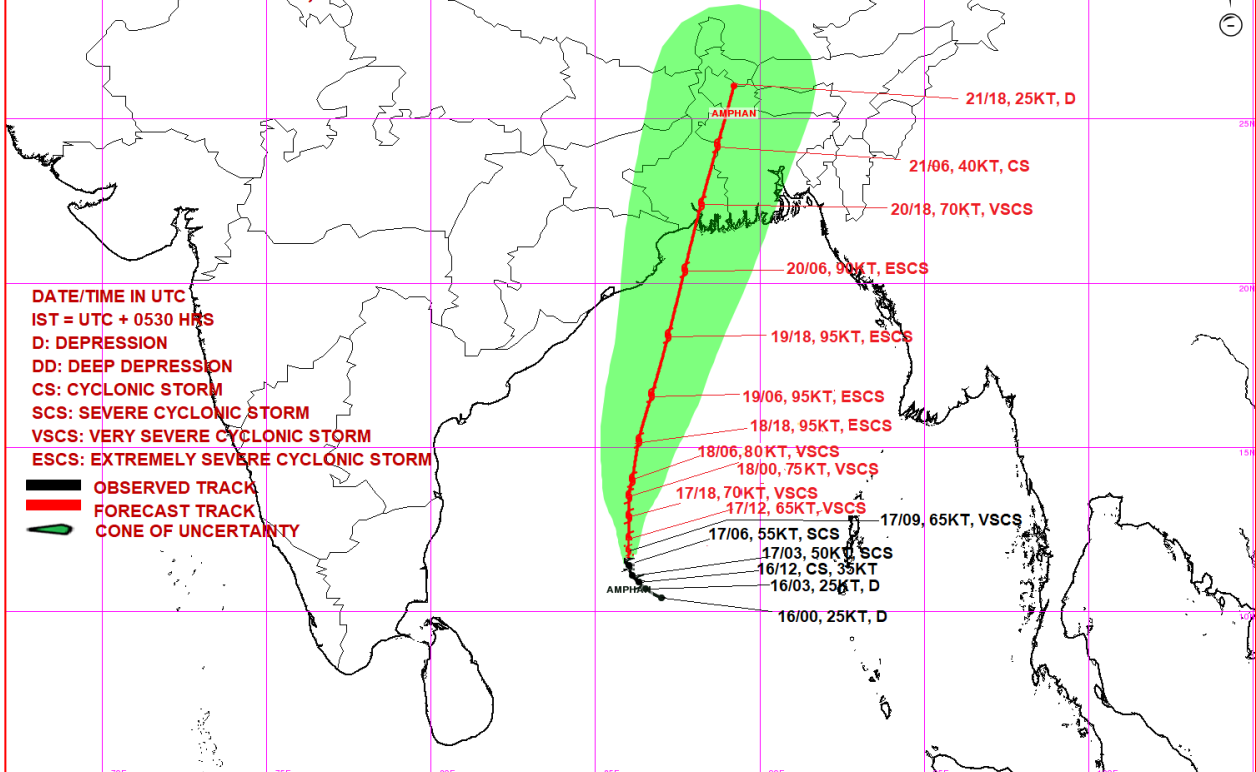
IMG_TIR1_TEMP 10.8 um 17-05-2020/(1600 to 1626) IST

L1C Mercator



Spatial rainfall distribution: Isolated: <25%, A few: 26-50%, Many: 51-75%, Most: 76-100%
Rainfall amount (mm): Heavy rain: 64.5 – 115.5, Very heavy rain: 115.6 – 204.4, Extremely heavy rain: 204.5 or more.

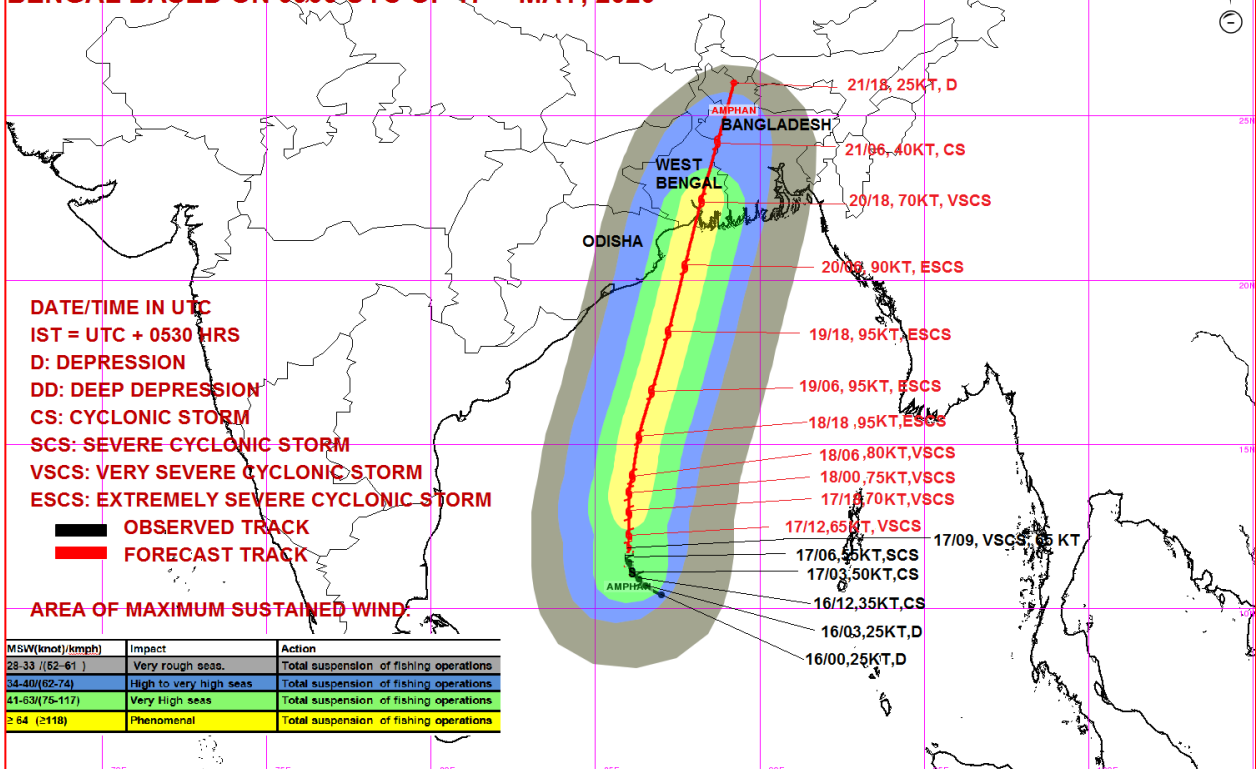
OBSERVED & FORECAST TRACK ALONGWITH CONE OF UNCERTAINTY OF VERY SEVERE CYCLONIC STORM, AMPHAN OVER CENTRAL PARTS OF SOUTH BAY OF BENGAL BASED ON 0900 UTC OF 17TH MAY, 2020



DATE/TIME IN UTC
 IST = UTC + 0530 HRS
 D: DEPRESSION
 DD: DEEP DEPRESSION
 CS: CYCLONIC STORM
 SCS: SEVERE CYCLONIC STORM
 VSCS: VERY SEVERE CYCLONIC STORM
 ESCS: EXTREMELY SEVERE CYCLONIC STORM

OBSERVED TRACK
 FORECAST TRACK
 CONE OF UNCERTAINTY

OBSERVED & FORECAST TRACK ALONGWITH QUADRANT WIND DISTRIBUTION OF VERY SEVERE CYCLONIC STORM, AMPHAN OVER CENTRAL PARTS OF SOUTH BAY OF BENGAL BASED ON 0900 UTC OF 17TH MAY, 2020



DATE/TIME IN UTC
 IST = UTC + 0530 HRS
 D: DEPRESSION
 DD: DEEP DEPRESSION
 CS: CYCLONIC STORM
 SCS: SEVERE CYCLONIC STORM
 VSCS: VERY SEVERE CYCLONIC STORM
 ESCS: EXTREMELY SEVERE CYCLONIC STORM

OBSERVED TRACK
 FORECAST TRACK

AREA OF MAXIMUM SUSTAINED WIND:

MSW(knot)/kmph)	Impact	Action
28-33 / (52-61)	Very rough seas.	Total suspension of fishing operations
34-40/(62-74)	High to very high seas	Total suspension of fishing operations
41-63/(75-117)	Very High seas	Total suspension of fishing operations
≥ 64 (≥118)	Phenomenal	Total suspension of fishing operations

MSW(knot)/kmph)	Impact	Action
28-33 / (52-61)	Very rough seas.	Total suspension of fishing operations
34-40/(62-74)	High to very high seas	Total suspension of fishing operations
41-63/(75-117)	Very High seas	Total suspension of fishing operations
≥ 64 (≥118)	Phenomenal	Total suspension of fishing operations

Spatial rainfall distribution: Isolated: <25%, A few: 26-50%, Many: 51-75%, Most: 76-100%

Rainfall amount (mm): Heavy rain: 64.5 – 115.5, Very heavy rain: 115.6 – 204.4, Extremely heavy rain: 204.5 or more.